



## Handling System for Rack Type Wall/floor mounted storing shelf

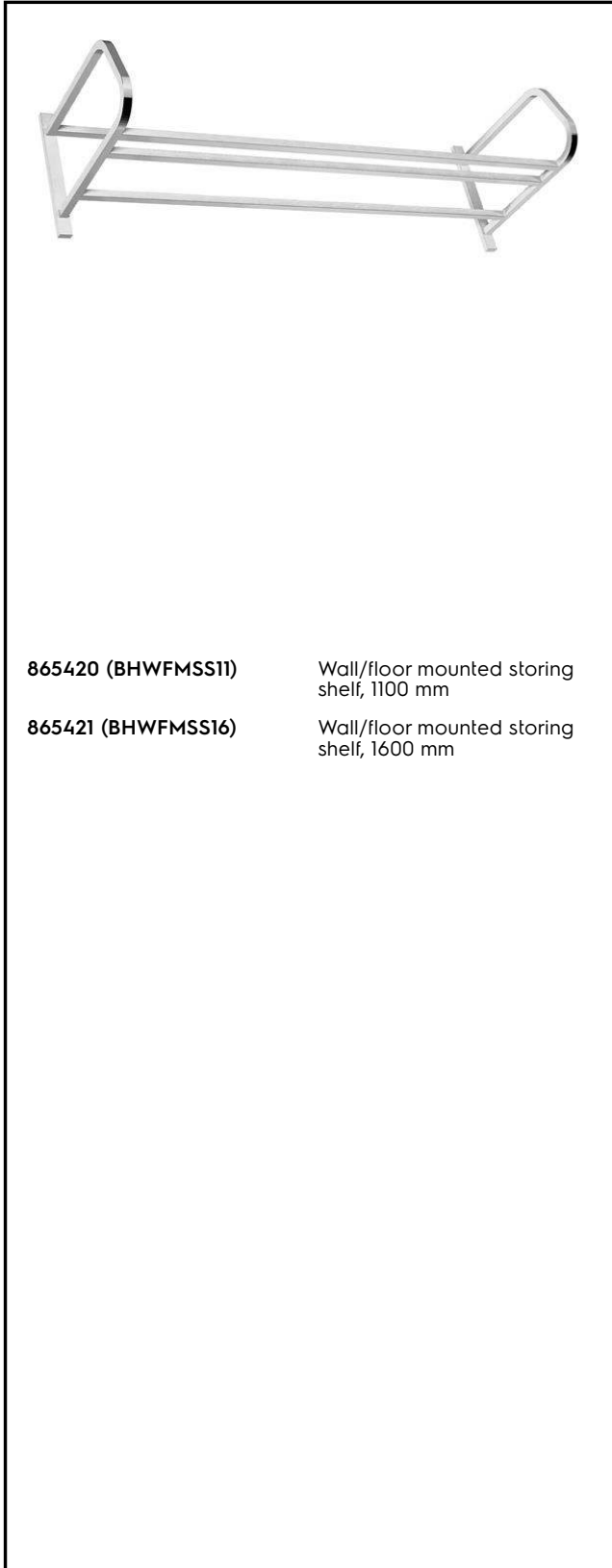
ITEM # \_\_\_\_\_

MODEL # \_\_\_\_\_

NAME # \_\_\_\_\_

SIS # \_\_\_\_\_

AIA # \_\_\_\_\_



865420 (BHWFMSS11) Wall/floor mounted storing shelf, 1100 mm

865421 (BHWFMSS16) Wall/floor mounted storing shelf, 1600 mm

### Optional Accessories

- 2 legs for floor mounted storing shelf PNC 855296

APPROVAL: \_\_\_\_\_



## Key Information:

### External dimensions, Width:

865420 (BHWFMSS11) 1100 mm

865421 (BHWFMSS16) 1600 mm

### External dimensions, Depth:

578 mm

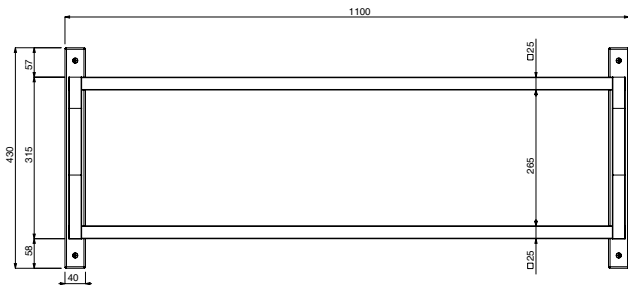
### External dimensions, Height:

### Net weight:

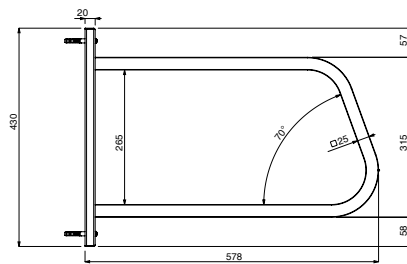
865420 (BHWFMSS11) 8 kg

865421 (BHWFMSS16) ISO 9001; ISO 14001 kg

Front



Side



Top

